

## Aston Waikiki Sunset

Condominium Resort



Enjoy spectacular views of Diamond Head, the blue Pacific, or the Honolulu city lights. Well-suited to families and centrally located in a quiet residential neighborhood just over a block from famous Waikiki beach, this resort offers relaxed island-style living in spacious one and two-bedroom suites with complete kitchens and private lanais.

### HOT SELLING TIPS

- Great location
- Spectacular view of Honolulu city lights
- No extra person charge for up to 5 people; hotels usually charge after 2
- Private lanais
- Washers and dryers on most floors
- On-site sundry store sells groceries, toiletries and rents beach equipment
- Ample parking
- Best access into and out of Waikiki for those on the go
- Heated swimming pool, free lighted tennis court, large recreation deck, outdoor barbecues, sauna, hospitality lounge, meeting room
- Children 17 and under stay free

229 Paoakalani Avenue  
Waikiki, O'ahu 96815  
Phone (808) 922-0511  
Fax (808) 923-8580  
AstonWaikikiSunset.com

GDS Codes: Galileo AH 9000  
Sabre AH 23448  
Amadeus AH HNL700  
Worldspan AH HNL60



### ROOM AMENITIES

- Central air-conditioning
- Clock radio
- Coffee maker, rice cooker
- Color cable TV
- Fully-equipped kitchen w/microwave
- Crib (on request)
- High-speed internet access (\$)
- Hair dryer
- In-room safe (\$)
- Iron/board
- Private lanais

### PROPERTY SERVICES

- Children stay free
- Daily maid service
- Free daily newspaper
- Free WIFI service (6th floor recreation deck & hospitality room)
- Guest activities desk
- High speed internet work stations(\$)
- Hospitality lounge
- Laundry facilities (coin operated)
- Meeting room (\$)
- Parking (\$)
- Sundry store

### RECREATION / LEISURE

- Free lighted tennis court
- Heated swimming pool
- Complimentary outdoor barbecues
- Sauna

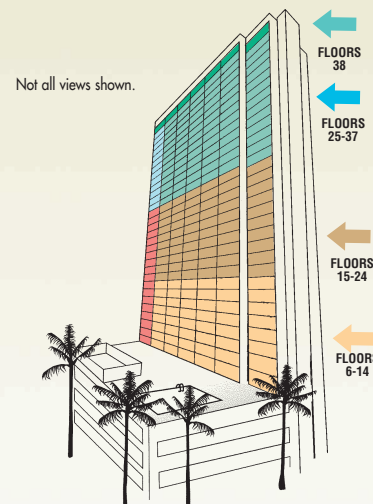
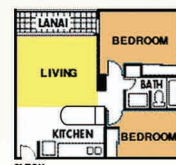
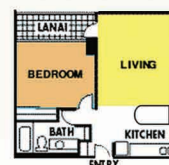
### HOTEL INFORMATION

- # Rooms..... 435
- # Floors ..... 38
- # Buildings..... 1
- # Elevators..... 4
- Check-in ..... 3:00 p.m.
- Check-out..... 12:00 noon

	DAILY RATE RANGE	GUESTS	MAX PAX
<b>1-Bdrm/1-Bath Suite (560 avg. sq. ft.)</b>			
Standard - 2t/sb, q/sb, k/sb	156 - 265	1-5	5
Superior - 2t/sb, q/sb, k/sb	170 - 281	1-5	5
Deluxe Mt. View - 2t/sb, q/sb	184 - 306	1-5	5
Deluxe Ocean View - 2t/sb, q/sb, k/sb	201 - 335	1-5	5
<b>2-Bdrm/1-Bath Suite (633 avg. sq. ft.)</b>			
Diamond Head - q/2t/sb, q/k/sb	295 - 571	1-6	6
Ocean View - q/2t/sb, q/k/sb	314 - 599	1-6	6
<b>2-Bdrm/2-Bath Suite† (1,200 avg. sq. ft.)†*</b>			
Penthouse/Mt. View - k/2t/sb	436 - 776	1-6	6
Penthouse/Ocean View - k/2t/sb	475 - 849	1-6	6

† Call property direct.  
Rates valid 1/3/10 - 1/2/11  
Daily rates fluctuate depending on availability and time of travel.  
Bedding Code: t (twin) 2t (2 twins) d (double) 2d (2 doubles)  
q (queen) k (king) sb (sofabed) mb (Murphy bed) b (bunk bed)  
\* 3 night minimum stay for penthouse units

Floor plans are representations only and may not reflect actual layouts.



Not all views shown.

Penthouse

1-Bedroom Suite

2-Bedroom Suite